

HAMID ONIFADE

HEIGHT 190 - 6' 2.5"
BUST 95 - 38"
WAIST 70 - 27"
HIPS 92 - 36"
SHOES 46.5 - 12.5
HAIR black
EYES brown

@iohma





charmschool

PHOTOGRAPHS BY JASON KIBBLER STYLING BY NICK SULLIVAN

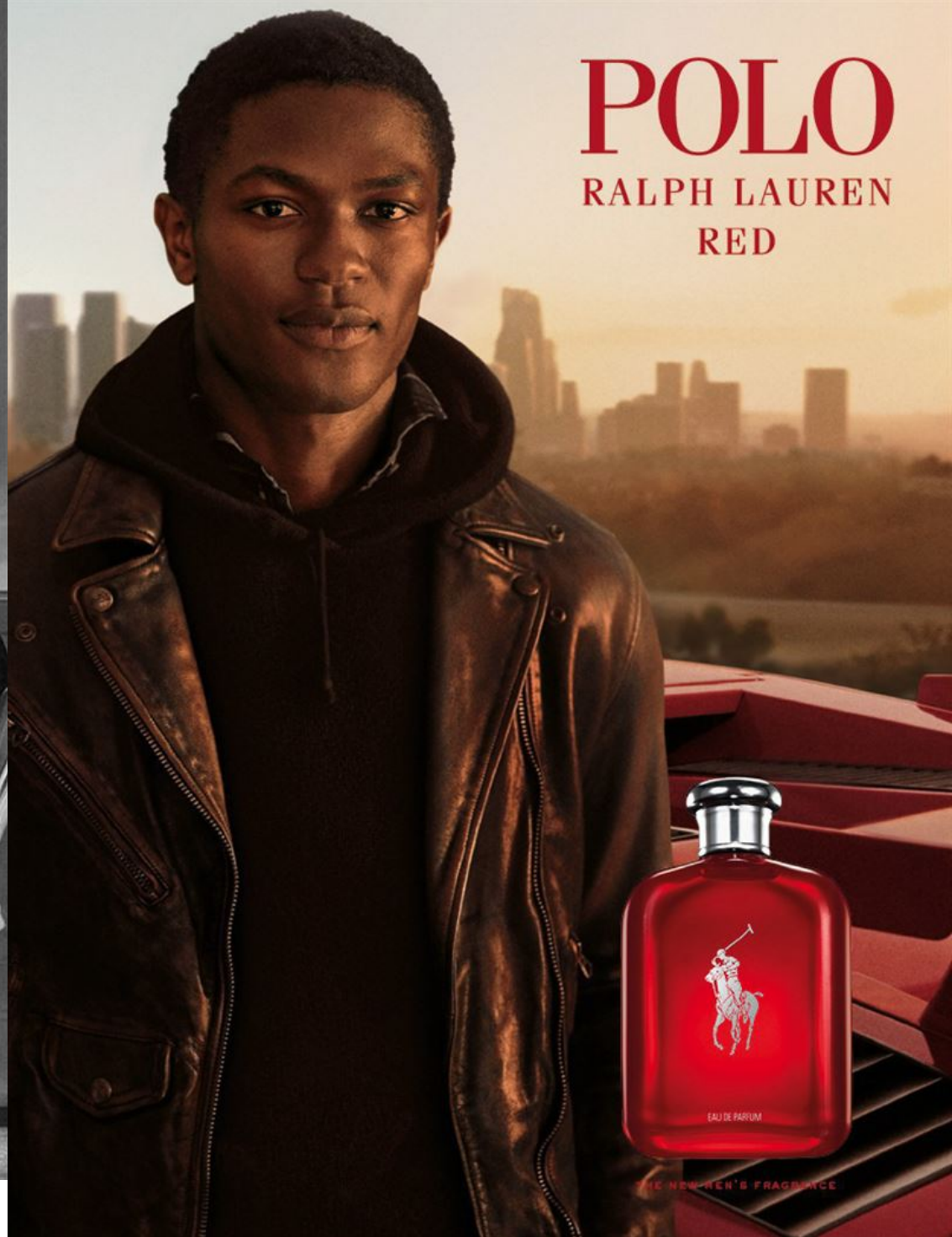
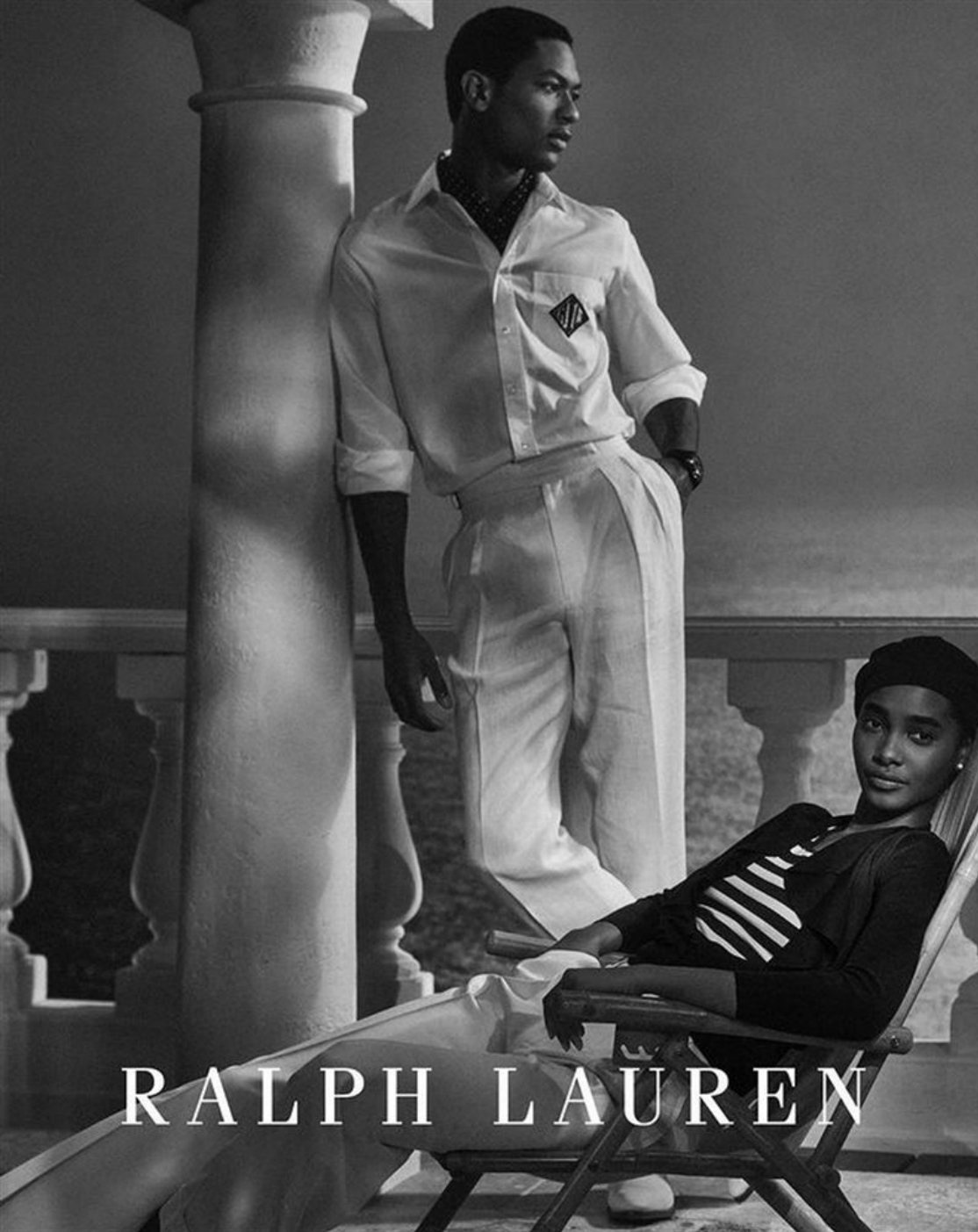








RAINBOW CONNECTION
 Vibrant pieces for the lovers and the dreamers. From left: Araks swimsuit and Ralph Lauren Collection shoes; Berluti Jacket and Charlie by Matthew Zink briefs; Araks swimsuit and Christian Louboutin shoes; Berluti jacket, Mikoh swimsuit and Wandler shoes; Berluti pants, Charlie by Matthew Zink briefs, Christian Louboutin shoes and Pato Suda shoes; Paul Smith jacket, Solid & Stripped swimsuit and Aquazzuno shoes. All settings, models, props, etc. throughout.





RALPH LAUREN





all clothing by
BELSTAFF FW15
MODELS EVAN
at AMERICANA,
MATTHEW at
FUSION, HAMID
at RED, RAFAEL
at REQUEST
and RONALD at
WILHELMINA;
hair SHIN ARIMA
at FRANK REPÉ;
make-up TRACY
ALFAJORA at ART
DEPARTMENT;
casting EDWARD
KIM at THE EDIT
DESK; production
ELIZABETH
BUNDLETT at A*
PRODUCTIONS;
photo assistants









